

Claremont Avenue Motpsur Park, KT3 6QR

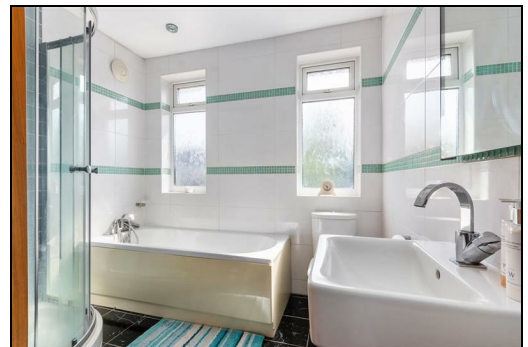
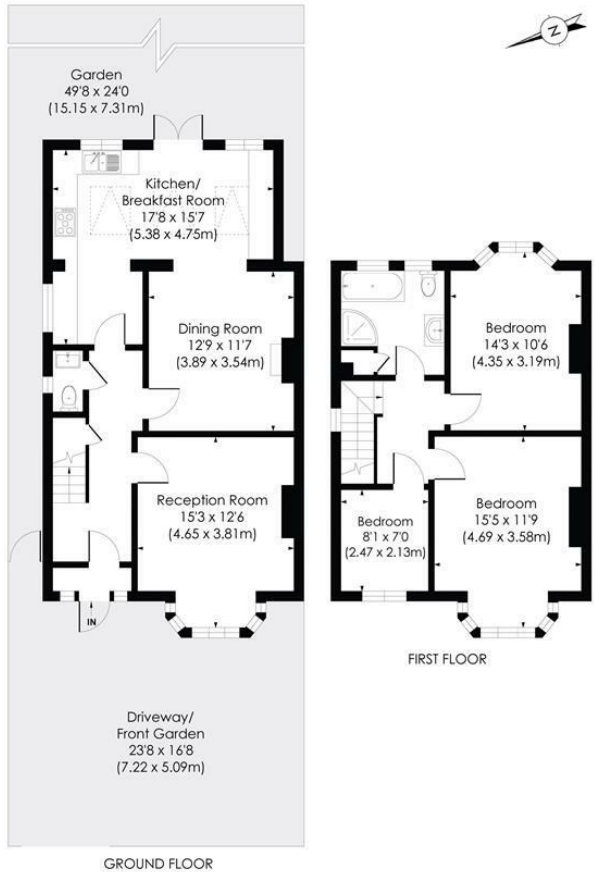
£725,000 Freehold



This attractive (1,205 sqft – 111 sqm)THREE BEDROOM 1930's Semi Detached House has a lovely extended kitchen/dining/family room and is perfectly located for Motpsur Park Station (0.1 mile) and Shops. A superb first/second time purchase with off street parking to the front, a good sized separate reception room, downstairs w.c, 49.8 'ft garden with side access and a modern family bathroom. Excellent potential to further extend s.t.p.p.

CLAREMONT AVENUE, KT3

Approx. Gross Internal Floor Area
1205 Sq. ft/111.94 Sq. m



© Pixangle Property Marketing Ltd. info@pixangle.com Tel: 0208 870 2118
 This floor plan has been prepared for the purpose of illustration only in accordance with the latest RICS code of measuring practice and is not to scale. All measurements and areas are approximate and whilst every effort has been made to ensure the accuracy of the plan contained here, no responsibility is taken for any error, omission or misstatement.

- Three Bedroom 1930' Semi Detached House
- 0.1 Mile to Motspur Park Station
- Off Street Parking and Side Access
- Spacious extended Kitchen/Dining/Family Room
- Potential To further extend S.T.P.P
- Separate front reception room
- Downstairs W.C
- Lovely 49.8 'ft Rear Garden
- EPC - D
- Council Tax Band - E

Energy Efficiency Rating		Current	Possible
<small>Very energy efficient - lower running costs</small>			
A	(91-100)		
B	(81-90)		
C	(69-80)		
D	(55-68)	62	82
E	(39-54)		
F	(21-38)		
G	(1-20)		
<small>Not energy efficient - higher running costs</small>			
England & Wales		EU Directive 2002/91/EC	

For Free Mortgage Quote and Best Mortgage Rates, call Ellisons Mortgage Advisor on 0208 944 9595



Although these particulars are believed to be correct, their accuracy is not guaranteed and they do not form part of any contract.

Celebrating 30 years of successful Sales and Lettings in Merton

